

BÜHLMANN GanglioCombi® MAG ELISA

Pre-Analytcs

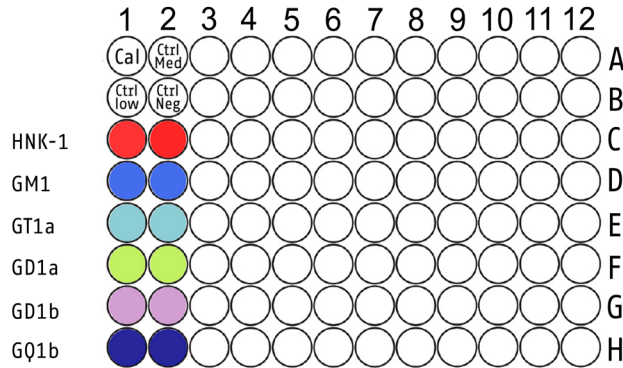
Specimen	Serum
Specimen collection	Use conventional plain tubes to collect blood. Process to serum according to manufacturer's instruction
Storage of Serum	<ul style="list-style-type: none"> • Prepare aliquots • 2-8°C (up to 16 days) • - 20°C (up to 12 months) • Freeze/thaw cycles not recommended

Number of Analyses

- GanglioCombi MAG ELISA allows for full flexibility regarding:
 - number of samples to be pipetted
 - use and arrangement of enzyme conjugates on microtiter plates
- A sample is investigated for 6 different antibodies with IgG and IgM and/or with IgG/IgM mix conjugate.
- Each kit contains 2 microtiter plates.

Enzyme Conjugate	Number of Analyses per Kit	Number of Analyses per individual Sample
IgG & IgM	12 + 12	2 x 6 (2 conjugates / 6 antigens)
IgG/IgM Mix	24	1 x 6 (1 mix conjugate / 6 antigens)

Microtiter Plate Layout



- Coated in rows with HNK-1 (C1 - C12) and individual gangliosides from D1 to H12
- Break-away strip convenience

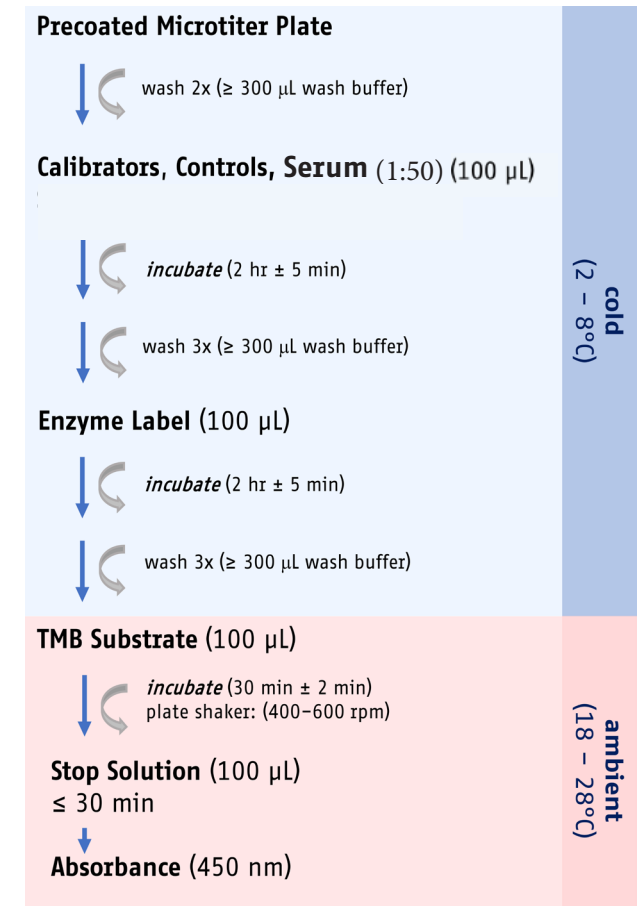
Reagent Preparation

Reagent	Temperature °C
Wash buffer	2-8
Incubation Buffer	2-8
Enzyme conjugate	2-8
TMB substrate	18-28
Stop solution	18-28

Sample Preparation

1. Dilute serum samples 1:50 with incubation buffer and vortex gently.
2. Leave diluted samples, reconstituted calibrators and controls at 2-8°C for 30 minutes prior pipetting (for targeted investigation).

ELISA Procedure*



*Please see the full instructions for use (IFU) on buhlmannlabs.com for more detailed information prior to use.

BÜHLMANN GanglioCombi® MAG ELISA. Not for use in diagnostic procedures. For product availability outside the US, please contact BÜHLMANN Laboratories for further information.

Literature References

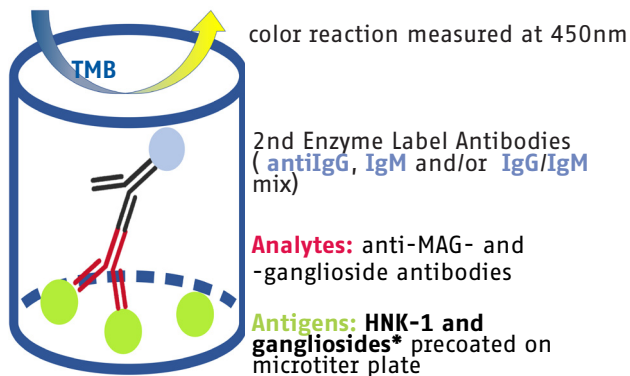
- Kuijf M et al., Journal of the Neurological Sciences, 2005
 Spatola M et al., Neurology, 2016
 Franciotta D et al., Clin Chem Lab Med, 2018
 Delmont E et al., Journal of Neurology, 2019

BÜHLMANN GanglioCombi® MAG ELISA

Methodology

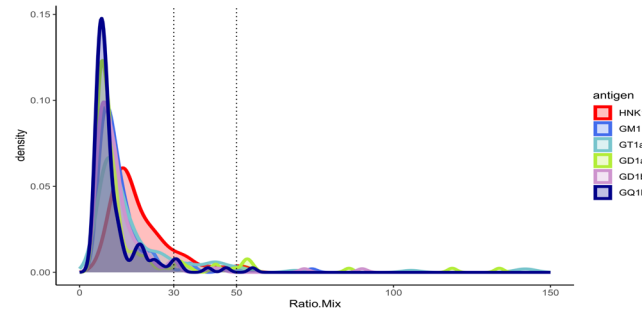
Method	ELISA For laboratory use only
Analyte	anti-MAG* and -ganglioside** antibodies *Antigen: HNK-1 chemically synthesized sulphated disaccharide **Gangliosides: GM1, GD1a, GD1b, GT1a, GQ1b
Test	multi-parametric, semi-quantitative
Suggested Use	Targeted investigation of most relevant anti-MAG and/or -ganglioside antibodies of IgG, IgM and/or IgG/IgM Mix. anti-H HNK-1 antibodies >50% Ratio may be confirmed with anti-MAG Antibodies ELISA (ordering code: EK-MAG-U)

Principle of the Assay



*We use double-quality control-checked gangliosides for the coating of the microtiter plates

Reference Interval



Healthy Individuals: N = 120 (m = 60; f = 60)
Negative: 90.8%; Grey zone: 6.3%; Positive: 2.9%

¹ Autoimmune diseases (N = 50): Vasculitis and ANCA positive denoted: 3 and 10; SLE: 5; RA: 9 Sjögren Syndrome: 6; Others (ANA positive denoted): 3; Autoimmune Thyroiditis: 5; MCTD: 1; Autoimmune peripheral neuropathies (GM1 and GQ1b pos): 1; MG: 7

² Other neurological diseases (N = 34): Alcoholism: 1; diabetes 5; ALS: 15; Sarcoidosis: 4; WM: 4; Chagas Disease: 5

Performance Data

Crossreactivity:	No (incl. AIDS ¹ and ONDs ²)
Reproducibility (%CV):	7.7–19.1% (anti-ganglioside antibodies) 23.5–33.2% (anti-MAG antibodies)
Specificity (95 %CI):	88.0% (72.3–95.3%)
Sensitivity (95 %CI):	68.1% (39.6–87.5%)

BÜHLMANN GanglioCombi® MAG ELISA. Not for use in diagnostic procedures. For product availability outside the US, please contact BÜHLMANN Laboratories for further information.

Results

- The measurement of absorbance is proportional to the titer of (MAG- and/or -gangliosides) antibodies in a given sample.
- Calibrators and Controls are anti-GM1 and/or IgG antibodies
 - Titers are expressed as %Ratio of anti-GM1 or anti-IgG antibodies
 - Calculation:
IgG and IgM: OD Sample/OD Calibrator x 100%;
Mix: OD Sample/OD Calibrator x 200%

Handling of Titer levels

Titer levels [%Ratio]	Interpretation [titer]
< 30	negative
30 - 50	grey zone (equivocal)
> 50	positive

Ordering information:

BÜHLMANN GanglioCombi® MAG ELISA 5 ganglio-sides, 1xMAG EK-GCM-U

Variants:

BÜHLMANN GanglioCombi® *Light* ELISA 3 gangliosides EK-GCL-S-U

anti-GM1 Antibodies ELISA 1 ganglioside EK-GM1-GM-U

CE 0123

Parts of the BÜHLMANN GanglioCombi® MAG ELISA kits are patent protected by: CA 2 996 073 and WO 2017/046172 A1



BÜHLMANN Laboratories AG Switzerland
info@buhlmannlabs.ch
www.buhlmannlabs.ch
Phone +41 61 487 12 12

BÜHLMANN Diagnostics Corp USA
info@buhlmannlabs.com
www.buhlmannlabs.com
Phone 844 300 9799