

**1** | Stool Extraction with CALEX® Cap  
10 min.

**2** | Turbidimetric Analysis  
10 min.

**3** | Result Reporting

Optimize Fecal Calprotectin Workflow with

- CALEX® Cap  
Proper and Efficient Stool Extraction
- BÜHLMANN fCAL® turbo  
Flexible Turbidimetric Immunoassay

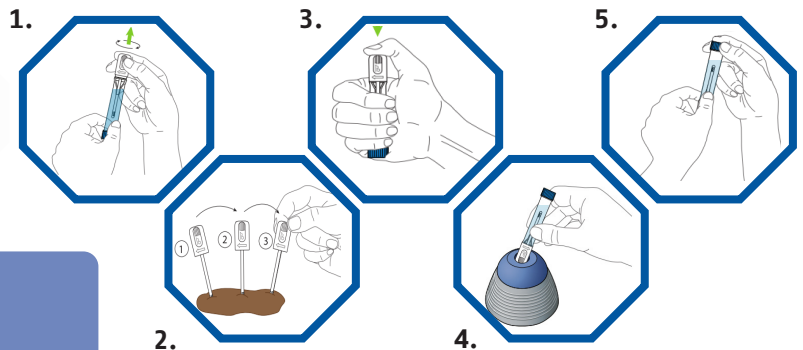
## CALEX® Cap for Highly Standardized Stool Pre-Analytics

### CALEX® Cap Stool Preparation

CALEX® Cap device offers an efficient, convenient and hygienic preparation of stool samples. Its unique design makes it an ideal device characterized not only by improved safety over manual weighing but also by offering high stability of stool samples. Furthermore, the CALEX® Cap is compatible with total laboratory automation (TLA) solutions minimizing the complexity of sample processing thus significantly reducing hands-on time.

### SPEED - Save Time with a Simple and Reliable Procedure

CALEX® Cap is designed to facilitate stool preparation by following 5 simple steps and therefore allowing for fast and reliable stool pre-analytics- the key to reliable results. Time savings in stool pre-analytics are essential to manage increasing sample volumes. The fecal calprotectin testing workflow is further simplified when using CALEX® Cap, reducing hands-on time by ~70%.<sup>1</sup>



#### Benefits:

- Prefilled with extraction buffer - ready to use
- Fast and reliable stool preparation procedure - Only 5 simple steps

### FLEXIBILITY - Full Automation in Combination with BÜHLMANN fCAL® turbo

CALEX® Cap is compatible with most chemistry platforms. In combination with the BÜHLMANN fCAL® turbo, the state-of-the-art high-throughput turbidimetric assay for fecal calprotectin testing, CALEX® Cap revolutionizes calprotectin pre-analytics and enables workflow optimization through full automation.

#### Benefits:

- Compatible with most chemistry platforms
- Workflow optimization through full automation

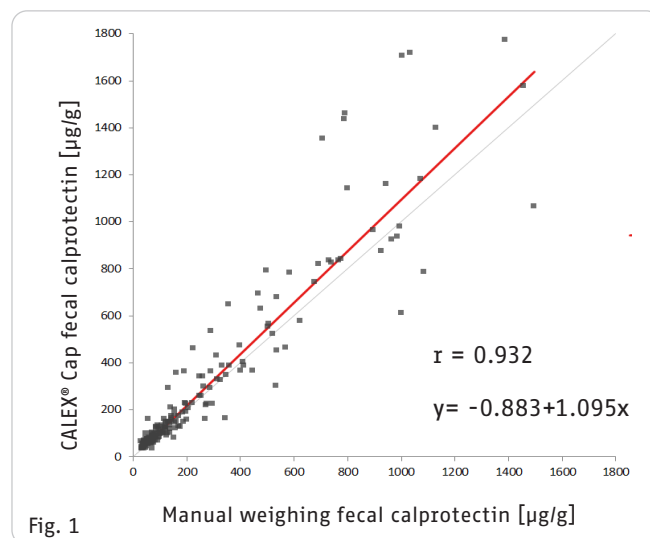


## QUALITY - Reliable stool preparation for measuring Fecal Calprotectin

The CALEX® Cap device combines ease of use and high comparability to the common manual weighing method for the extraction of fecal calprotectin. A Passing-Bablok regression analysis of 175 patient samples shows an excellent correlation between the two methods (Fig. 1).

### Benefits:

- Simple, hygienic and safe sample preparation for fecal calprotectin testing
- Excellent correlation to manual weighing extraction method



## Measure several analytes from the same sample

The CALEX® Cap buffer is optimized to measure fecal calprotectin and pancreatic elastase out of the same sample preparation.



**Fecal Calprotectin** has been shown to be an excellent biomarker for IBD. It is useful as an aid in the diagnosis of IBD and in the discrimination of IBD (Crohn's and Ulcerative colitis) from IBS. BÜHLMANN Laboratories offers the largest product portfolio in the market of calprotectin tests and has set the standard for more than 10 years. All BÜHLMANN fecal calprotectin assays are compatible with CALEX® prepared samples (CALEX® Cap is currently FDA 510(k) cleared for use with the BÜHLMANN fCAL® turbo).



**Fecal Pancreatic Elastase** is a well-established biomarker to detect exocrine pancreatic insufficiency in patients suffering from conditions such as chronic pancreatitis and cystic fibrosis. Pancreatic elastase's clinical utility has been in numerous peer-reviewed studies. BÜHLMANN turbidimetric assay for pancreatic elastase will be available soon for evaluation.

Watch the CALEX® Cap stool preparation tutorial video on YouTube!



BÜHLMANN fCAL® turbo is FDA 510(k) cleared (K190784) For *in vitro* Diagnostic Use.

CALEX® Cap (B-CALEX-C50, B-CALEX-C200, B-CALEX-C500) is 510(k) cleared (K191718 & K232057) For *in vitro* Diagnostic Use.

### References

1. Schallberger, Y. et al. The Way to Total Automation of Calprotectin Measurement in Faeces with BÜHLMANN fCAL® turbo. Swiss MedLab 2016, 13. - 16. June 2016. Berne, Switzerland.



BÜHLMANN Laboratories AG  
Switzerland  
info@buhlmannlabs.ch  
www.buhlmannlabs.ch  
Phone +41 61 487 12 12

BÜHLMANN Diagnostics Corp  
USA  
info@buhlmannlabs.com  
www.buhlmannlabs.com  
Phone 844 300 9799

### CE-marked products

CALEX® is a registered trademark of BÜHLMANN in many countries.  
Parts of the CALEX® Cap are patent protected by:  
EP2833795(B1); US9752967(B2); AU2016203121(B2); CA2997598(C);  
JP6307132(B2); KR10-1875862(B1).

### Ordering Codes:

**CALEX® Cap**  
B-CALEX-C50 50 devices  
B-CALEX-C200 200 devices  
B-CALEX-C500 500 devices  
**BÜHLMANN fCAL® turbo**  
KK-CAL (Kit)  
B-KCAL-RSET (Reagent Set)  
B-KCAL-CASET (Calibrator Kit)  
B-KCAL-CONSET (Control Kit)